

# ACE HXP 150

## Hydraulic Multi Activity Crane

Capacity : 15 tonnes  
Man Lift Height : 21 Meters  
Aerial Access Platform cum  
Articulated Rough Terrain Crane

**ACE** INDIA'S NO. 1  
CRANE BRAND



**PATENT  
Pending**



## Specifications

## HXP 150

<b>LIFTING CAPACITY</b> (Free on wheels)	15 Tons Pick 'N' Carry Duty 230 Kgs Aerial Platform Duty (Manlift)	<b>FLUID CAPACITIES</b>	
<b>ENGINE</b>	Simpson's S433(I) F1 (CEV BS-III), 4 cylinder, water cooled diesel engine or suitable equivalent engine	Air Cleaner	0.75 Ltrs.
Rated Power	48 BHP (36KW) at 2200 RPM	Engine	8.00 Ltrs.
<b>TRANSMISSION</b>	Heavy duty, sliding mesh with 6 forward and 2 reverse speeds with high low range selector.	Fuel Tank	45.00 Ltrs.
Clutch	Heavy duty, single, dry friction, cerametallic clutch plate with diaphragm type pressure plate.	Hydraulic Tank	125.00 Ltrs.
Top Speed	28 KMPH without load.	Transmission	48.00 Ltrs.
<b>HYDRAULIC SYSTEM</b>	<ul style="list-style-type: none"> <li>● Gear/Intra vane type main pump.</li> <li>● Four spools control valve (heavy duty)</li> <li>● Three spools control valve for basket operation</li> <li>● Suction line has 100 mesh size strainer while return line is fitted with 25 micron full flow filter</li> <li>● Two double acting life cylinders, two double acting steering cylinders and two double acting extension cylinders</li> </ul>	<b>ELECTRICAL SYSTEM</b>	12V. Negative earth with 35 Amp. alternator and 75 Amp hr. battery.
<b>POWER STEERING</b>	Articulation through 2 hydraulic cylinders 55° articulation on either side and turning radius of 6.5 Mtrs. (approx) on outer rear wheels.	<b>TYRES</b>	
<b>BRAKES</b>	<ul style="list-style-type: none"> <li>● Fully air actuated brakes on front and rear wheels. Front and rear brakes are actuated through a single pedal.</li> <li>● Parking brake is pneumatically operated, fail safe type</li> </ul>	Front	11.00 x 20 - 16 PR (4 Nos.)
<b>TELESCOPIC BOOM</b>	4 part boom 3 part fully hydraulic & 4th part power extended	Rear	13.00 x 24 - 12 PR (2 Nos.)
<b>BOOM LUFFING</b>		<b>SAFETY</b>	<ul style="list-style-type: none"> <li>● Safe load indicator system with hydraulic cutoff</li> <li>● Basket capacity limiter (230 Kgs)</li> <li>● Audio overload indication. Hose failure protection.</li> <li>● Audio over hoisting indication.</li> <li>● Safety brakes on hoist. Cylinder guards.</li> </ul>
<b>HOIST</b>	Winch is driven by hydraulic motor and fitted with hook block employing 4 falls of 13 mm dia rope.	<b>STANDARD EQUIPMENT</b>	<ul style="list-style-type: none"> <li>● ROPS fully enclosed wide view cabin with rotomould canopy.</li> <li>● Front tyre protector.</li> <li>● Front and rear work lights.</li> <li>● Reflectors &amp; rear view mirror.</li> <li>● Tool kit.</li> <li>● Gauges :-               <ol style="list-style-type: none"> <li>a) Water temperature.</li> <li>b) Engine oil pressure.</li> <li>c) RPM meter cum hour recorder</li> <li>d) Air pressure</li> </ol> </li> </ul>
Hoist Speed	50 Mtrs./Min. (Line speed)	<b>OPTIONAL EQUIPMENT</b>	<ul style="list-style-type: none"> <li>● Fly jib.</li> <li>● Steering Wheel</li> <li>● Spark arrester</li> <li>● 14.00 x 25</li> </ul>
		<b>OPERATING WEIGHT</b>	
		FAW	5350 Kgs.
		RAW	8000 Kgs.
		Total	13350 Kgs.

# ACE

## HXP150

### AERIAL PLATFORM

Access platform / Man Lift Basket is provided with quick coupling connections for easy and fast Installation / Removal

Length	1800 mm (1.8 m)
Width	910 mm (0.91 m)
Capacity	230 Kgs
Maximum Working Height	21 m
Maximum Platform Height	19 m
Maximum Horizontal Outreach	16.8m
Jib Angle - Up	70°
- Down	70°
Jib Articulation Range	140° with 2 Mtrs. above & 2 Mtrs. below horizontal
Platform Rotation	180° (90° on either side) Hydraulically Driven through Slew / Rotary Drive

# MULTI ACTIVITY CRANE



Jib  
Articulation



Platform Rotation



# ACE



- 1 LIFT CYLINDERS  
Heavy duty lift cylinders ensure higher lifting capacities.



- 2 MAIN FRAME  
Heavy duty & robust construction.



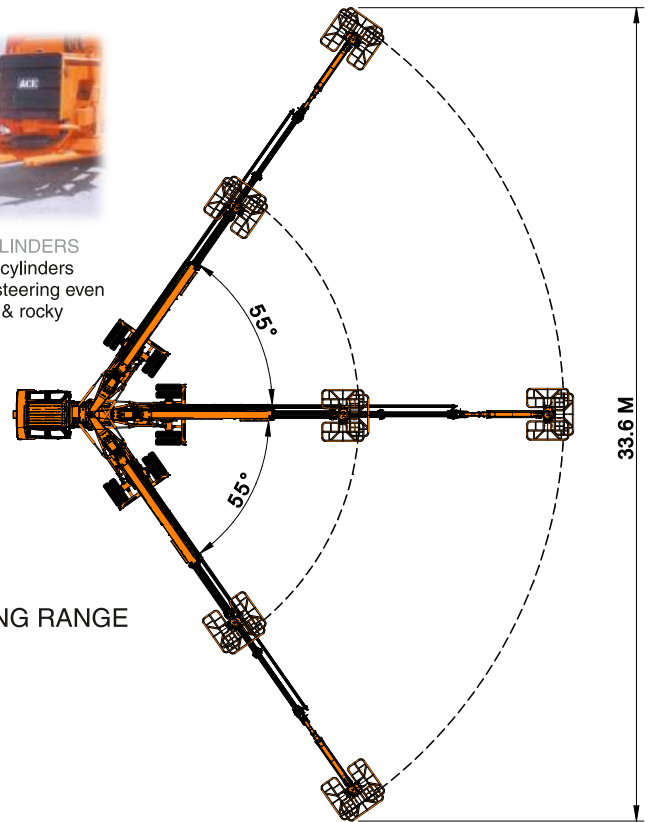
- 3 GROUND CLEARANCE  
High ground clearance of 400mm for easier rough terrain operation.



- 4 ROPS CABIN  
Wide view ROPS cabin with better visibility.

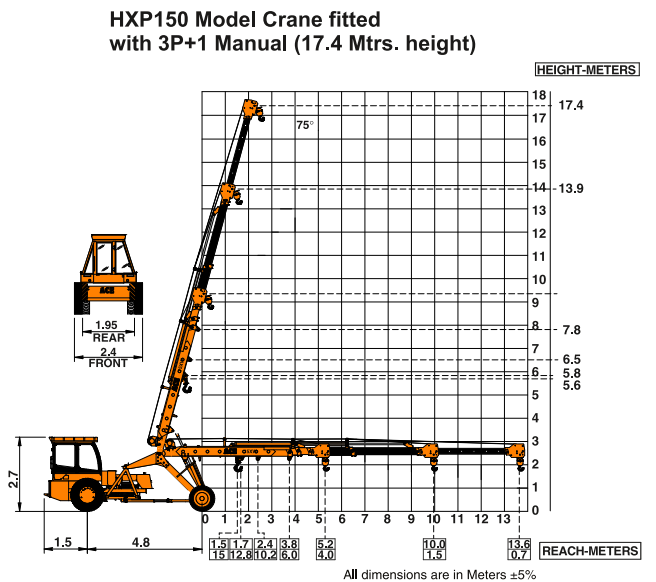
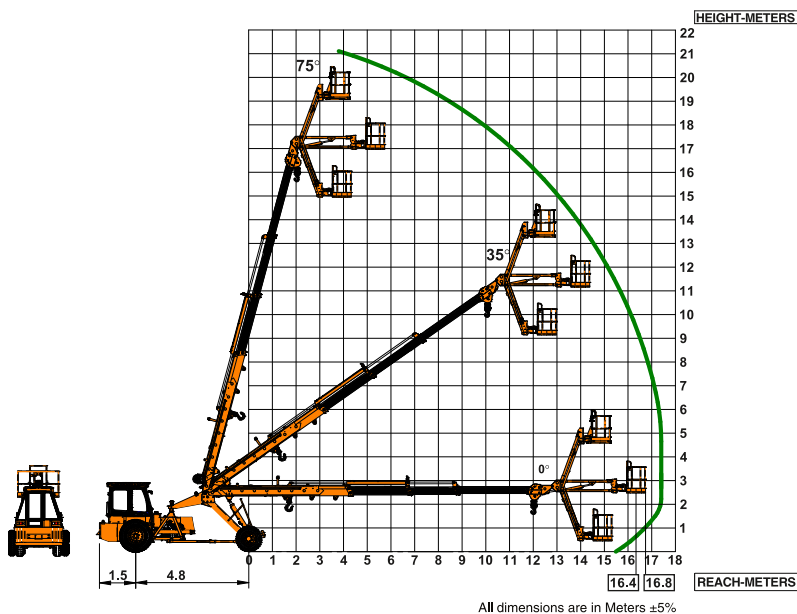


- 5 STEERING CYLINDERS  
700 mm stroke cylinders ensure proper steering even in loose, sandy & rocky terrains.



## Man Basket Load Chart

- Man Basket Maximum Capacity - 230 Kgs
- SWL is based on 60% Stability and Strength.





## Mobile Cranes (9-80 Tonnes)



**Crawler Cranes**

## Tractors



## Harvester Combine



## Forklifts



## Vibratory Rollers



## Backhoe Loader



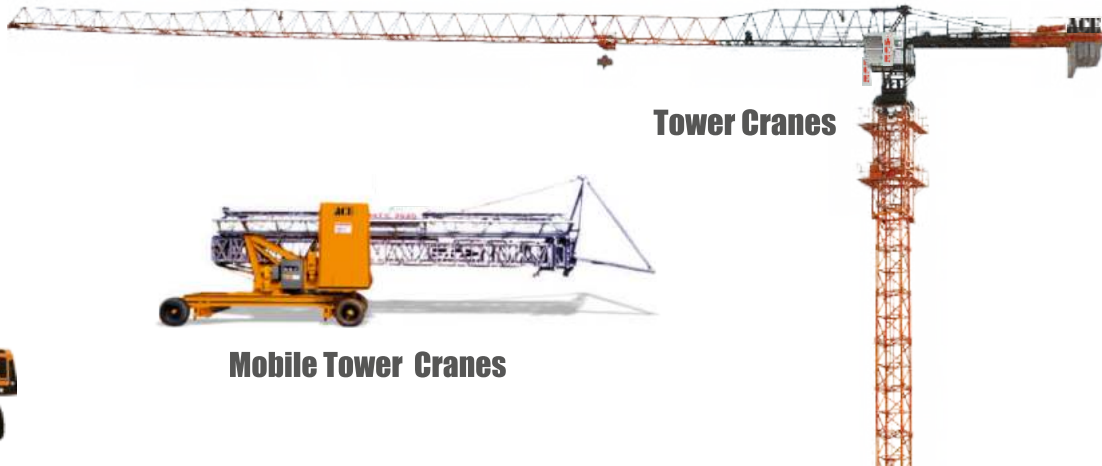
## Motor Grader



## Piling Rigs



## Tower Cranes



## Mobile Tower Cranes

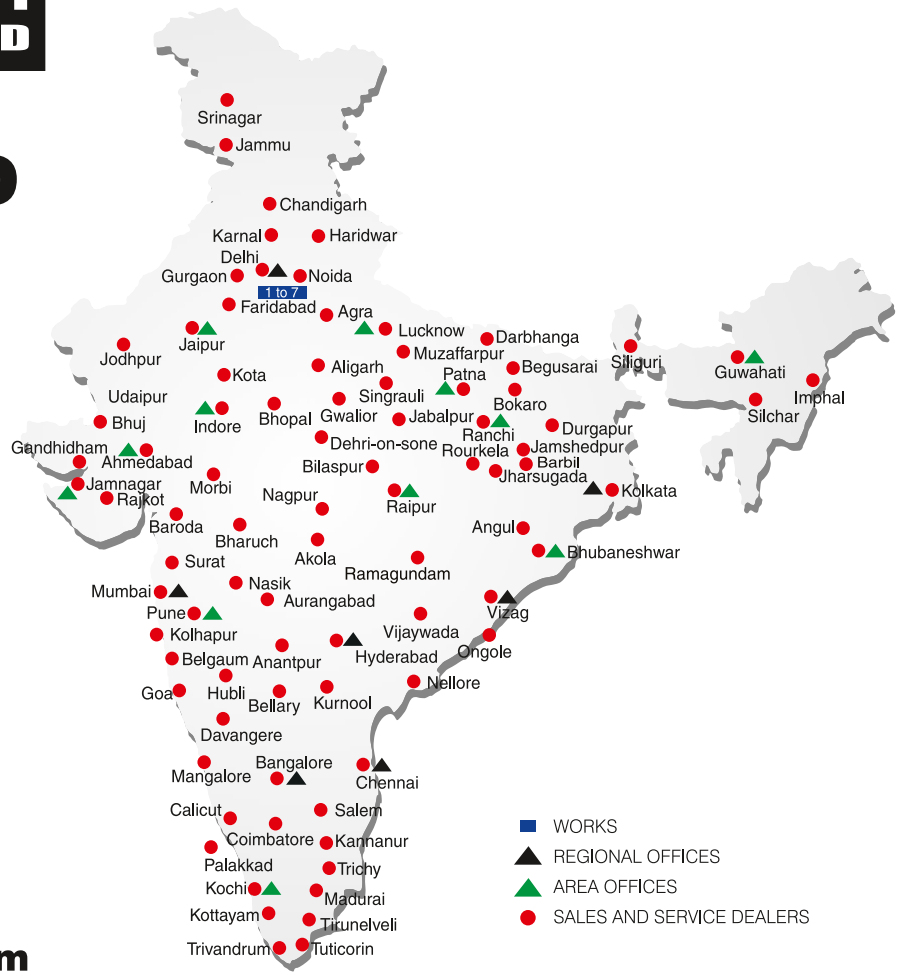


# BUILT TO PERFORM



**RELIABLE AND  
DEPENDABLE  
EFFICIENCY**

## NETWORK



**Toll Free Help Line  
1800 1800 004**

[www.ace-cranes.com](http://www.ace-cranes.com)

### MARKETING H.Q.

4th Floor, Pinnacle  
Surajkund, NCR-121009  
Ph. : +91-129-4550000  
Fax : +91-129-4550022  
E-mail: marketing@ace-cranes.com

### REGISTERED OFFICE

Dudhola Link Road, Dudhola  
Palwal-121102, Haryana  
Ph.: +91-1275-280111  
Fax: +91-1275-280133  
CIN : L74899HR1995PLC053860

### MUMBAI OFFICE

31, "Kalpataru Court"  
Chembur, Mumbai - 400074  
Ph.: +91-22-25206846, 25207070  
Fax: +91-22-25207071  
E-mail: acemumbai@ace-cranes.com

### KOLKATA OFFICE

"Forma Towers" 84-A, Second Floor  
AJC Bose Road, Kolkata - 700014  
Ph.: +91-9038070630  
E-mail: acekolkata@ace-cranes.com

### CHENNAI OFFICE

1st Floor, "Alsa Regency", 165  
Eldams Road, Alwar Pet  
Chennai - 600018  
Ph.: +91-44-24314253  
Fax: +91-44-24314252  
E-mail: acechennai@ace-cranes.com

## HERE TO SERVE YOU.

### SPARE PARTS & SERVICE

ACE has all India Sales and Service network operating out of all the major cities. These outlets are fully equipped to provide genuine spare parts and services by company trained engineers. These outlets are further supported by company officials based at Delhi, Mumbai, Chennai, Kolkata, Ahmedabad, Surat, Pune, Jaipur, Chandigarh, Ranchi, Raipur, Indore, Bhubneswar, Lucknow, Jamnagar, Hyderabad, Bangalore, Guwahati, Patna, Vizag & Kochi.



**Action Construction Equipment Ltd.**

Contact:



ACE reserves the right to alter any specifications without prior notice. Dimensions, weights & capacities mentioned herein are variable by ± 5%. Accessories if shown are not part of the Standard Equipment.