

ACE

16 XW

Hydraulic Mobile Crane

16 Tonnes Capacity
Rough terrain and rugged
articulated pick n move crane.

ACE INDIA'S NO. 1
CRANE BRAND



- Best in Class Stability
- Better Creep Speed
- Heavy Duty & Robust Construction
- Ergonomically Designed Cabin
- Fail Safe Air Brakes

Specifications

16XW

LIFTING CAPACITY (Free on wheels)	16 Tonnes
ENGINE	ACE-A50 (CEV BS-III) 4 cylinder, water cooled diesel engine
Rated Power	49.5 HP at 2200 RPM
TRANSMISSION	Heavy duty, sliding mesh with 6 forward and 2 reverse speeds with high low range selector.
Clutch	Heavy duty, single, dry friction cerametallic clutch plate with diaphragm type pressure plate.
Top Speed	28 KMPH Without load
STEERING	Lever operated with 55° articulation on either side and turning radius of 6.5 Mtrs. (approx) on outer rear wheels
BRAKES	Air operated S Cam dual brakes on front wheels and air operated disc brakes on rear wheels. Rear wheels brakes are actuated through a single pedal Parking brake is pneumatically operated fail safe type

HYDRAULIC SYSTEM	<ul style="list-style-type: none"> ● Gear / Intra Vane type Main Pump. ● Four spools control valve with built in Relief valve (heavy duty) ● Suction line has 100 mesh size Strainer while return line is fitted with 25 micron full flow filter ● Two double acting lift cylinders, two double acting steering cylinders and two double acting extension cylinders.
TELESCOPIC BOOM	Three part boom with hydraulically operated extensions
Telescoping Time	18 Sec.
BOOM LUFFING	
Time	20 Sec.
HOIST	Winch is driven by hydraulic motor and fitted with hook block employing 4 falls of 13mm dia. Rope.
Hoist Speed	50 Mtrs./Min. (Line speed)

ACE advantages



1 ROPS CABIN
Wide view ROPS cabin for better visibility.

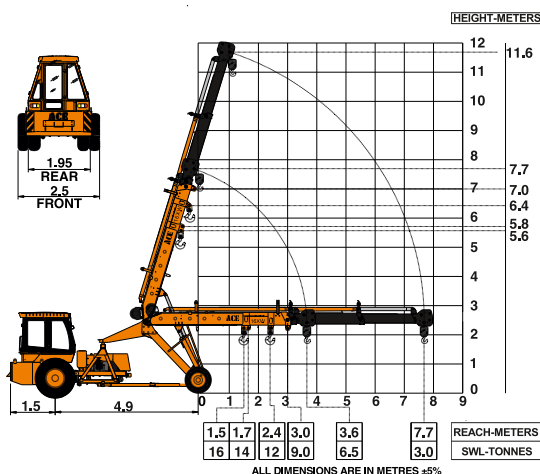


2 GROUND CLEARANCE
High ground clearance of 400mm for easier rough terrain operation.

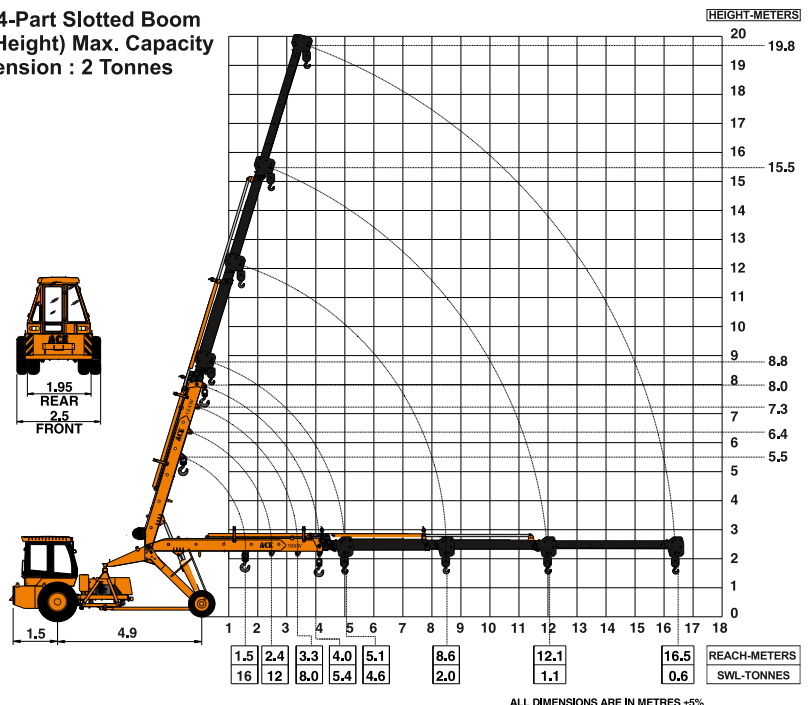


3 MAIN FRAME
Heavy duty & robust construction.

ACE 16XW 3-Part Non Slotted Boom
11.6 Mtrs. Height

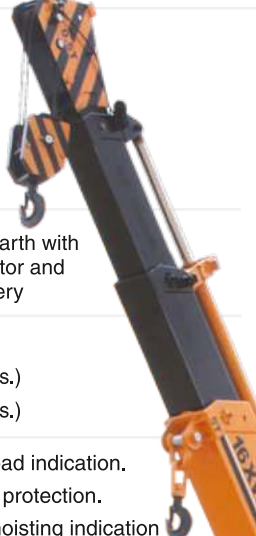


ACE 16XW 4-Part Slotted Boom
(19.8 Mtrs. Height) Max. Capacity
Manual Extension : 2 Tonnes



Specifications

16XW

FLUID CAPACITIES Engine 8.00 Ltrs. Fuel Tank 50.00 Ltrs Hydraulic Tank 140.00 Ltrs. Transmission 48.00 Ltrs.		<ul style="list-style-type: none"> ● Front and rear work lights. ● Reflectors & rear view mirror. ● Tool kit. ● Gauges :- <ul style="list-style-type: none"> a) Water temperature. b) Engine oil pressure. c) RPM meter cum hour recorder d) Air pressure
ELECTRICAL SYSTEM 12V, Negative earth with 35 Amp. alternator and 88 Amp hr. battery		OPTIONAL EQUIPMENT <ul style="list-style-type: none"> ● Simpson 74HP (54 kw) CEV, BS IV Diesel Engine Model SIV 436-F23, 4 cylinder, water cooled, turbo charged engine with Electronic Control Unit ● Fly jib : 2.75 Mtrs., 1.25 Tonnes Capacity ● Steering Wheel in lieu of lever type steering ● Spark arrestor ● Fire Extinguisher ● 4 part boom, 3 part hydraulically actuated and 4th part power extended (19.8 Mtrs. height) ● Over Hoist hydraulic cutoff ● Safe load indicator / LMI
TYRES Front 11.00 x 20 (4 Nos.) Rear 14.00 x 25 (2 Nos.)		OPERATING WEIGHT 14230 Kgs.
SAFETY <ul style="list-style-type: none"> ● Audio overload indication. ● Hose failure protection. ● Audio over hoisting indication ● Safety brakes on hoist. ● Cylinder guards 		
STANDARD EQUIPMENT <ul style="list-style-type: none"> ● ROPS fully enclosed wide view cabin with rotomould canopy. ● Front tyre protector. 		



4 STEERING CYLINDERS
880 mm stroke cylinders ensure proper steering even in loose, sandy & rocky terrains.



6 ELECTRONIC CLUSTER
Digital Electronic Cluster with advanced features



9 Air Brakes
Fully air operated S CAM dual brakes on front wheels



5 INCREASED VISIBILITY
Bigger size front windscreen and re-routing of hoses provide much better front visibility.



7 ECU
Electronic control unit for better fuel economy and diagnostic trouble shooting



8 LIFT CYLINDERS
Heavy duty lift cylinders ensure better lifting capacities.

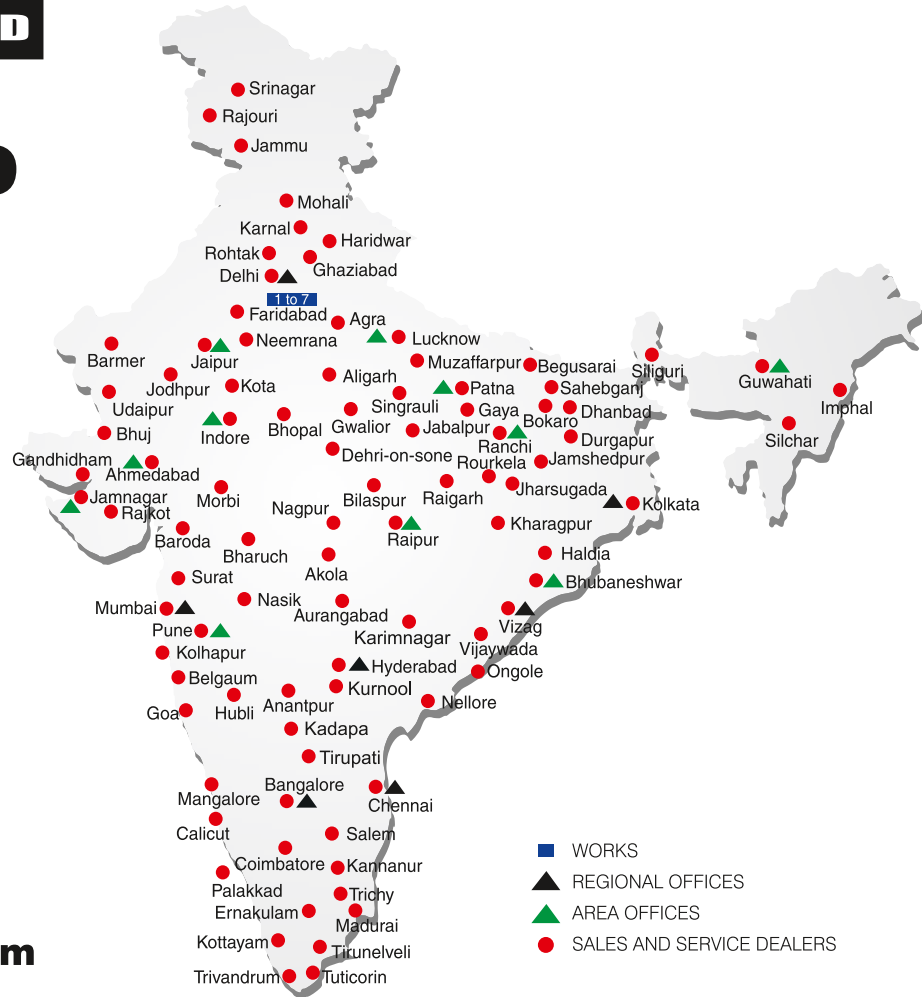


BUILT TO PERFORM



**RELIABLE AND
DEPENDABLE
EFFICIENCY**

NETWORK



www.ace-cranes.com

MARKETING H.Q.

4th Floor, Pinnacle
Surajkund, NCR-121009
Ph. : +91-129-4550000
Fax : +91-129-4550022
E-mail: marketing@ace-cranes.com

REGISTERED OFFICE

Dudhola Link Road, Dudhola
Palwal-121102, Haryana
Ph.: +91-1275-280111
Fax: +91-1275-280133
CIN : L74899HR1995PLC053860

MUMBAI OFFICE

31, "Kalpataru Court"
Chembur, Mumbai - 400074
Ph.: +91-22-25206846, 25207070
Fax: +91-22-25207071
E-mail: acemumbai@ace-cranes.com

KOLKATA OFFICE

"Forma Towers" 84-A, Second Floor
AJC Bose Road, Kolkata - 700014
Ph.: +91-9038070630
E-mail: acekolkata@ace-cranes.com

CHENNAI OFFICE

1st Floor, "Alsa Regency", 165
Eldams Road, Alwar Pet
Chennai - 600018
Ph.: +91-44-24314253
Fax: +91-44-24314252
E-mail: acechennai@ace-cranes.com

HERE TO SERVE YOU.

SPARE PARTS & SERVICE

ACE has all India Sales and Service network operating out of all the major cities. These outlets are fully equipped to provide genuine spare parts and services by company trained engineers. These outlets are further supported by company officials based at Delhi, Mumbai, Chennai, Kolkata, Ahmedabad, Surat, Pune, Jaipur, Chandigarh, Ranchi, Raipur, Indore, Bhubneshwar, Lucknow, Jamnagar, Hyderabad, Bangalore, Guwahati, Patna, Vizag & Kochi.



Action Construction Equipment Ltd.

Contact:



ACE reserves the right to alter any specifications without prior notice. Dimensions, weights & capacities mentioned herein are variable by ± 5%. Accessories if shown are not part of the Standard Equipment.