

ACE

TM 300

Truck Crane

Rugged and reliable
30T capacity
6x4 Drive Truck Crane

ACE INDIA'S NO. 1
CRANE BRAND



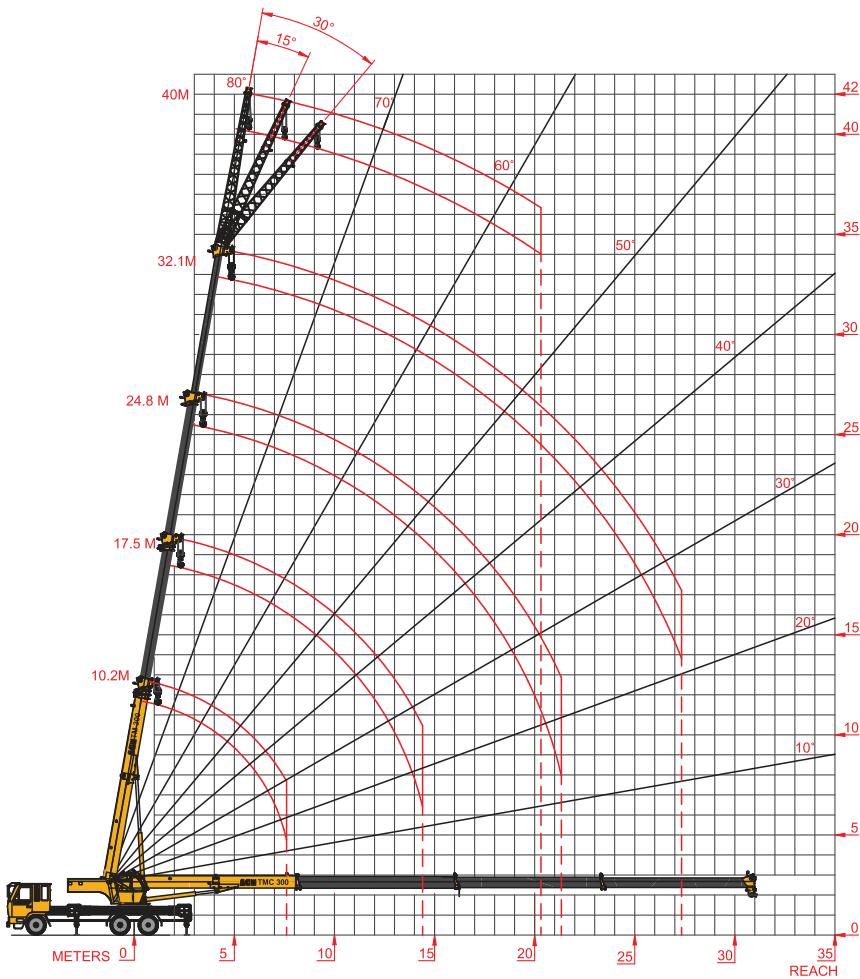
Nothing beats an **ACE**

TM 300

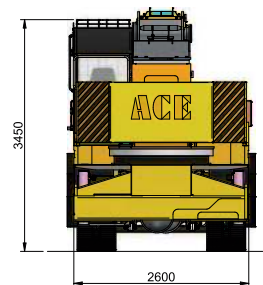
30 Tons



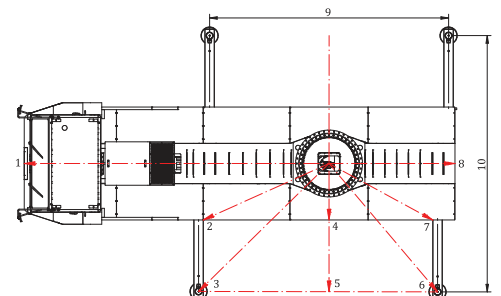
Working Range



Dimensions



Jib Position	Deduction
X	Meter
1	7.20
2	3.18
3	4.21
4	1.30
5	2.955
6	3.87
7	2.72
8	2.90
9	5.50
10	5.90



Specifications

TM300

Crane Chassis	<ul style="list-style-type: none"> • Torsion proof chassis is fabricated from high tensile steel plates. Outrigger boxes are integrated with the chassis. • Drive is 6x4 (4 wheel drive and 2 wheel steer) • Full width driver cabin is provided with driver and co-driver seating arrangements. 	Hoist System	Hoist winch is provided with piston type hydraulic motor driving grooved hoist barrel via reduction gear unit. The system is fitted with counter balance valve to control the speed of lowering and to hold the lifted load.
Engine	Turbo charged, inter cooled diesel engine developing 180 bhp@ 2200 rpm	Hook Block	5 sheaves hook block is provided
Clutch	Single plate(381mm), Dry, hydraulic actuated diaphragm type	Hoist Rope	18 mm diameter.
Transmission	Nine speed synchromesh Gear Box with crawler gear.	Capacities	Hydraulic Tank 400 Lts. Fuel Tank 335 Lts.
Top Speed	50 Kmph.	Operator's Cabin (Crane)	Cabin with maximum all round vision is fitted. All controls for crane motion and electrical controls are provided in the cabin. Cabin is fitted with fan and lights.
Brakes	Air pressurized diaphragm operated with dual line arrangement. Flick valves operated pneumatic hand brake on rear and front wheels.	Safety Equipment	<ul style="list-style-type: none"> • Safe load indicator provides radius and hook load indication with visual indication of approach to overload and audible indication of over load condition. • Overload and Over hoist cut-off. • Pressure relief in main circuit. • Pilot operated check valves are provided in all the cylinders.
Tyre Size	11.00 X 20-16 ply rating(12+1)	Performance Data	<ul style="list-style-type: none"> • Derrick Angle -3⁰ to 80⁰ • Derricking time 45-80 secs (In & out) • Telescoping time 80-90 secs • Slew 0-2 RPM • Hoist Single line speed 90 m/min. • Outriggers <ul style="list-style-type: none"> Out 34 secs In 26 secs Down 30 secs Up 38 secs
Outrigger	Four hydraulically operated outrigger beams fitted with lock valves. Outrigger blocks are removable and stowable.	Axle loads	Front axle 5900 kgs. Rear axle 20100 kgs. Total weight 26090 kgs.
Hydraulic System	Triple Gear pump driven by transmission P.T.O, supplies oil to all circuits except steering system.	Optional Equipment	Side folding lattice jib - 7.9 mtrs with three offset positions.
Super Structure	Fabricated with high tensile steel plates and is capable of unlimited slewing in either direction. Super structure is mounted on a sealed, internal teeth slew ring.		
Boom Derricking	Double acting hydraulic cylinder with counter balance safety valve.		
Slewing	Piston type hydraulic motor drives a pinion through reduction gear unit. Double counter balance valve is provided for smooth control and operations.		
Telescopic Boom	Double acting hydraulic cylinder is provided for boom telescoping. Four part boom is fabricated from high tensile steel plates and is extendable from 10.5 m to 33.0 m.		

Rated Lifting Capacity (in Kgs.) 85% Rating

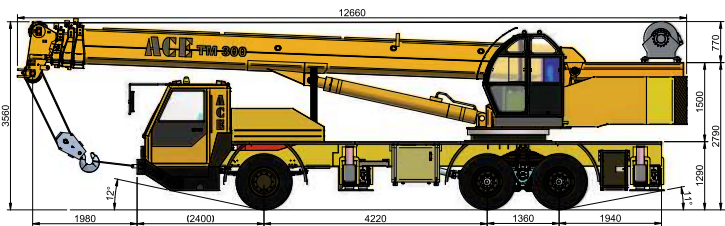
TM300

Radius Meter	360° BLOCKED			
	Jib Closed 10.2 M	Jib Extended 10.2-17.5M	Jib Extended 17.5 - 24.8 M	Jib Extended 24.8 - 32.1 M
Meter	Kgs.	Kgs.	Kgs.	Kgs.
3.0	30000			
3.5	26500	14500		
4.0	24200	14500	8300	
4.5	21500	14500	8300	
5.0	19500	14500	8300	
5.5	17500	14500	8300	6500
6.0	15500	13750	8100	6500
6.5	14000	13250	8100	6500
7.0	12000	12750	7800	6300
8.0	9500	10250	7500	6000
9.0		8250	7000	5500
10.0		6300	6300	5000
12.0		5100	5000	4500
14.0		3600	3800	3600
16.0		2600	2900	3000
18.0			2250	2300
20.0			1700	1800
22.0			1300	1400
24.0				1000
26.0				800
28.0				600
30.0				400

1. The above capacities are in accordance with Indian Standard Code - IS:4573

2. Rated loads are 85% of tipping loads. The loads shown are gross loads and the weight of the hook block, lifting tackle etc. must be considered as part of the lifted load.

Overall Dimensions



Capacity with Fly Jib (Kgs.)

Elevation of Main Boom	Main Boom + Jib 32.1m to 7.9m		
	Installation angle of jib		
	0°	15°	30°
80°	3000	2000	900
78°	2500	1800	850
75°	1800	1600	800
72°	1500	1300	750
70°	1250	1100	700
65°	1000	800	600
60°	800	600	1400
55°	700		

ALL DIMENSIONS ARE IN mm ± 5%

Mobile Cranes (9-80 Tonnes)



Tractors



Forklifts



Harvester Combine



Vibratory Rollers



Backhoe Loader



Crawler Cranes

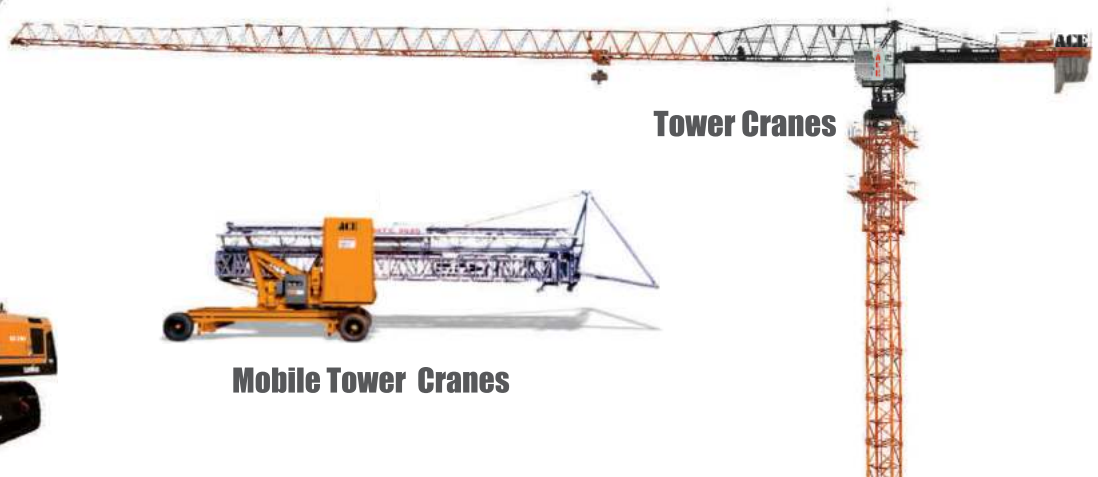
Motor Grader



Piling Rigs



Tower Cranes



Mobile Tower Cranes

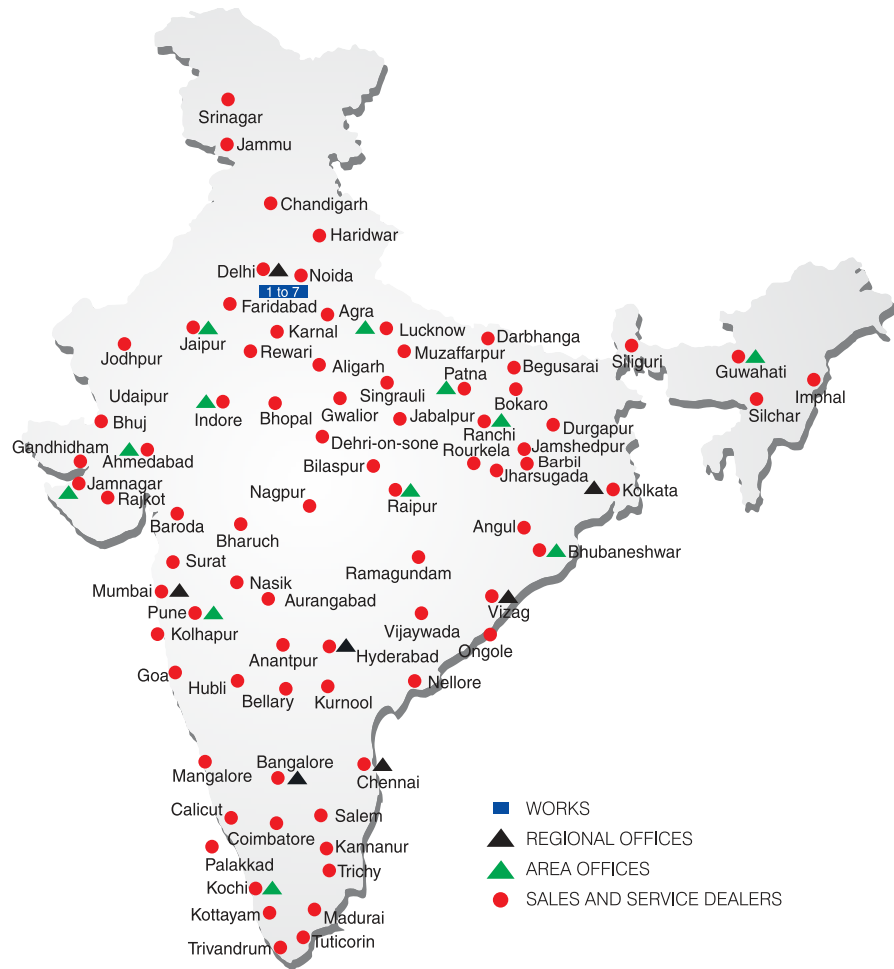


BUILT TO PERFORM



**RELIABLE AND
DEPENDABLE
EFFICIENCY**

NETWORK



**Toll Free Help Line
1800 1800 004**

www.ace-cranes.com

MARKETING H.Q.

4th Floor, Pinnacle
Surajkund, NCR-121009
Ph. : +91-129-4550000
Fax : +91-129-4550022
E-mail: marketing@ace-cranes.com

REGISTERED OFFICE

Dudhola Link Road, Dudhola
Palwal-121102, Haryana
Ph.: +91-1275-280111
Fax: +91-1275-280133
CIN : L74899HR1995PLC053860

MUMBAI OFFICE

31, "Kalpataru Court"
Chembur, Mumbai - 400074
Ph.: +91-22-25206846, 25207070
Fax: +91-22-25207071
E-mail: acemumbai@ace-cranes.com

KOLKATA OFFICE

"Forma Towers" 84-A, Second Floor
AJC Bose Road, Kolkata - 700014
Ph.: +91-9038070630
E-mail: acekolkata@ace-cranes.com

CHENNAI OFFICE

1st Floor, "Alsa Regency", 165
Eldams Road, Alwar Pet
Chennai - 600018
Ph.: +91-44-24314253
Fax: +91-44-24314252
E-mail: acechennai@ace-cranes.com

HERE TO SERVE YOU.

SPARE PARTS & SERVICE

ACE has all India Sales and Service network operating out of all the major cities. These outlets are fully equipped to provide genuine spare parts and services by company trained engineers. These outlets are further supported by company officials based at Delhi, Mumbai, Chennai, Kolkatta, Ahmedabad, Surat, Pune, Jaipur, Chandigarh, Ranchi, Raipur, Indore, Bhubneshwar, Lucknow, Jamnagar, Hyderabad, Bangalore, Guwahati, Patna, Vizag & Kochi.



Action Construction Equipment Ltd.

Contact:



ACE reserves the right to alter any specifications without prior notice. Dimensions, weights & capacities mentioned herein are variable by ± 5%. Accessories if shown are not part of the Standard Equipment.